



**JOIN US**



**JOIN US**



**CORE NETWORKING  
CLASSES**

**GET TRAINING BY  
INDUSTRY EXPERT  
AND CERTIFIED  
TRAINERS**

**Training Type**  
Online

**Course Duration**  
1.5 Months

**No of Hours**  
2 Hours/Day

**Certificate**  
Palo-Alto PCNSA - PCNSE

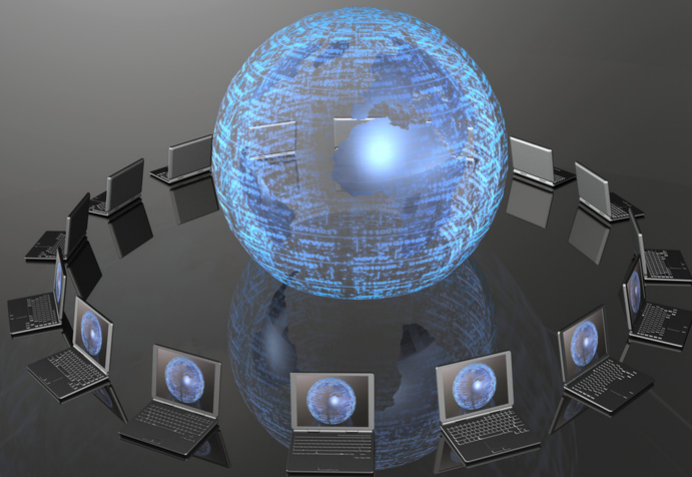
**Skill Level**  
Intermediate

**Study Material**  
Yes

**Batches Available**  
Weekdays/Weekends

**PALO-ALTO**

**THIS COURSE WILL  
INCLUDE PCNSE TO PCNSA  
LEVEL KNOWLEDGE OF  
PALOALTO NEXT  
GENERATION ENTERPRISE  
FIREWAL**





## COURSE CONTENT

### 01 Next-Generation Security Platform and Architecture overview

- Overview of the PA NGFW
- Platform and architecture overview
- SP3 Architecture overview
- Packet Flow of PaloAlto Firewall

### 02 Virtual, Physical and Cloud Deployment

- Different modes of Firewall deployment
- Deployment types of PA NGFW.

### 03 Initial Configuration

- Installation and lab setup for practical
- Initial configuration setup for device access
- Basic configuration check
- Hostname, Banner, DNS and NTP configuration
- Licensing, dynamic updates and software updates walkthrough

### 04 Interface Configuration

- Different modes of interfaces during deployment
- Scenario based Use cases of interface modes

### 05 Security and NAT Policies

- NAT configuration for Private-Public IP mapping
- Security policy configuration for Interzone communication
- Basic topology for internet access in virtual lab environment

### 06 App-ID™

- Overview of the advanced feature-set of PaloAlto Firewall
- Object configuration and assignment to respective policy
- Lab for App filtering policy configuration and management
- Application category and risk management check
- Application group configuration for administration

### 07 Content-ID™

- Use the Content-ID feature to define settings for URL filtering and data protection

### 08 URL Filtering

- URL filtering overview in PaloAlto NGFW
- URL categories, URL filtering profile and filtering profile action

## COURSE FORMAT: COMBINES LECTURE AND HANDS-ON LABS

### 09 Decryption

- Decryption overview and decryption concept
- Decryption policy configuration for SSL inspection
- Verify decryption at PaloAlto end

### 10 WildFire

- Overview of the WildFire feature of PaloAlto firewall

### 11 User-ID

- User mapping for legitimate access of the network services
- Use-ID agent and Captive portal settings

### 12 GlobalProtect

- Global protect overview and use cases
- Global protect user authentication
- Setup of Two-Factor authentication
- Enable group mapping

### 13 Site-to-Site VPNs

- Site-to-Site VPN overview
- Phase-1 and phase-2 components required for configuration
- IPsec VPN configuration on PaloAlto Firewall